

the Assateague Light, time exposures  
from Lighthouse Estates' dock, Chinc.



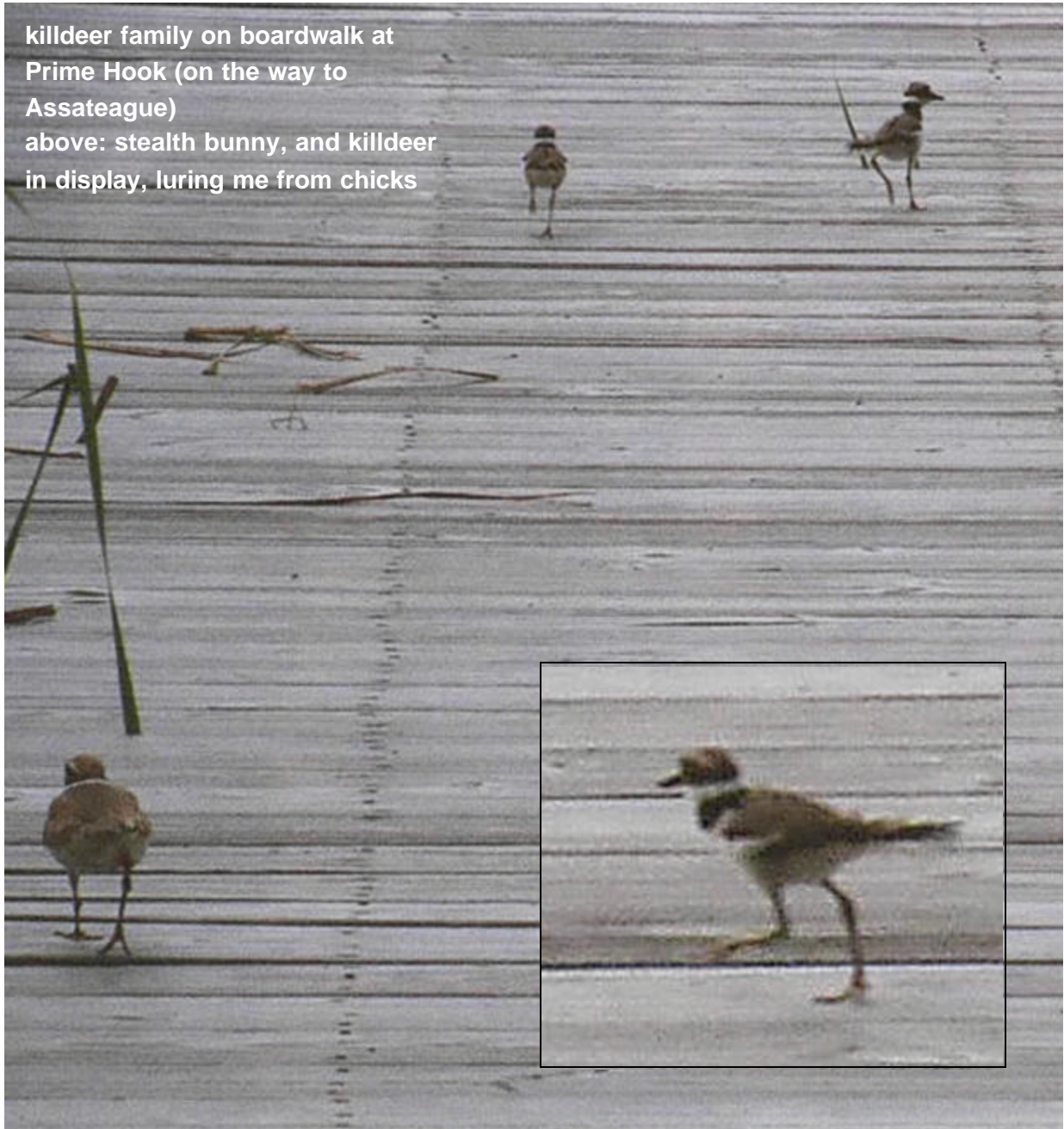




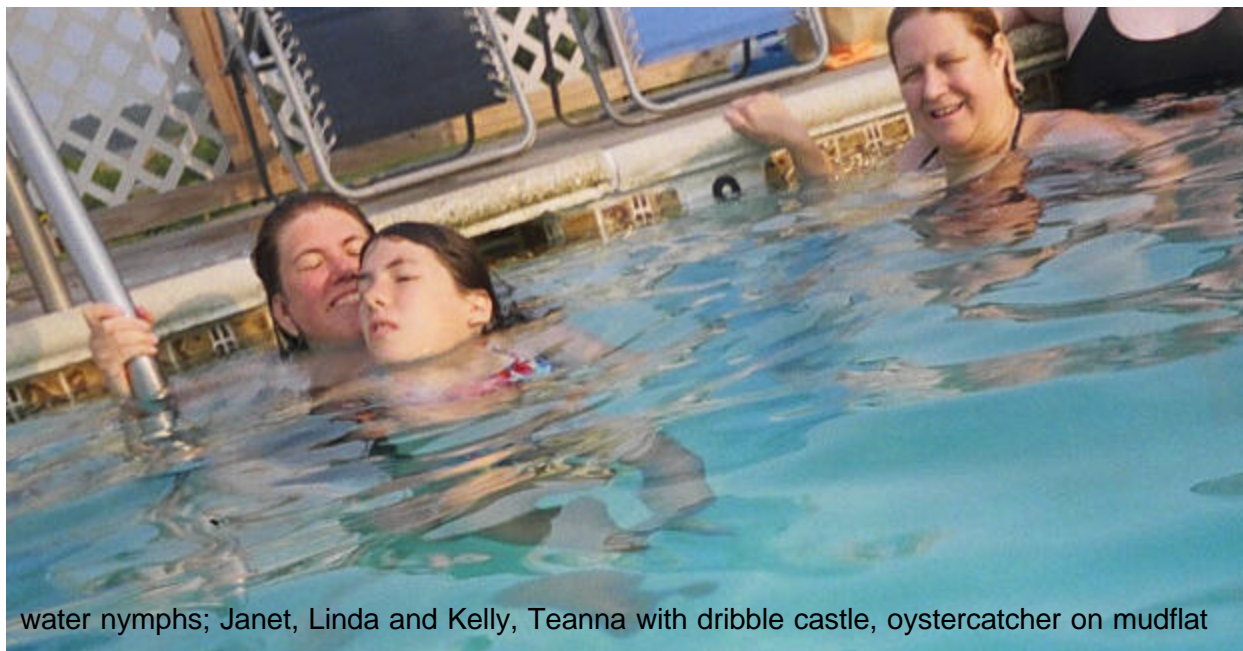




killdeer family on boardwalk at  
Prime Hook (on the way to  
Assateague)  
above: stealth bunny, and killdeer  
in display, luring me from chicks







water nymphs; Janet, Linda and Kelly, Teanna with dribble castle, oystercatcher on mudflat

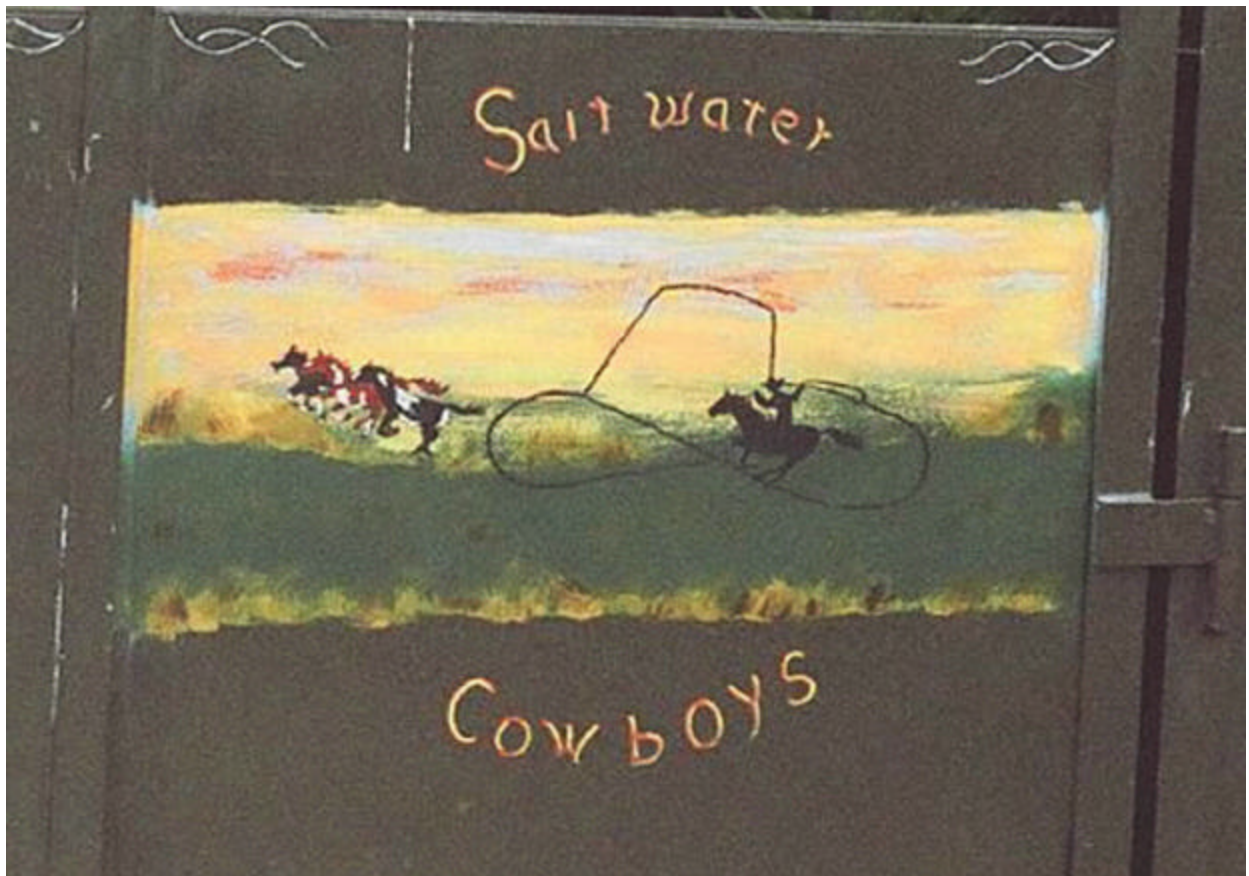




ranger birdwalk on Assateague, Chris in the cockpit of the Red Jeep



















the start of Pony Penning: Saturday evening drive of the southern bands into the pens on Assateague...Opposite, Surfer Dude arrives (the liver chestnut stallion with the blond mane)...below, the ubiquitous white pony, not a common color, one or more appear in most of my photos as well as postcards from the island; it's true white, not an aged grey or albino

